



Arch.: Delugan Meissl, Vienna

 **EQUITONE**
Fibre cement facade materials



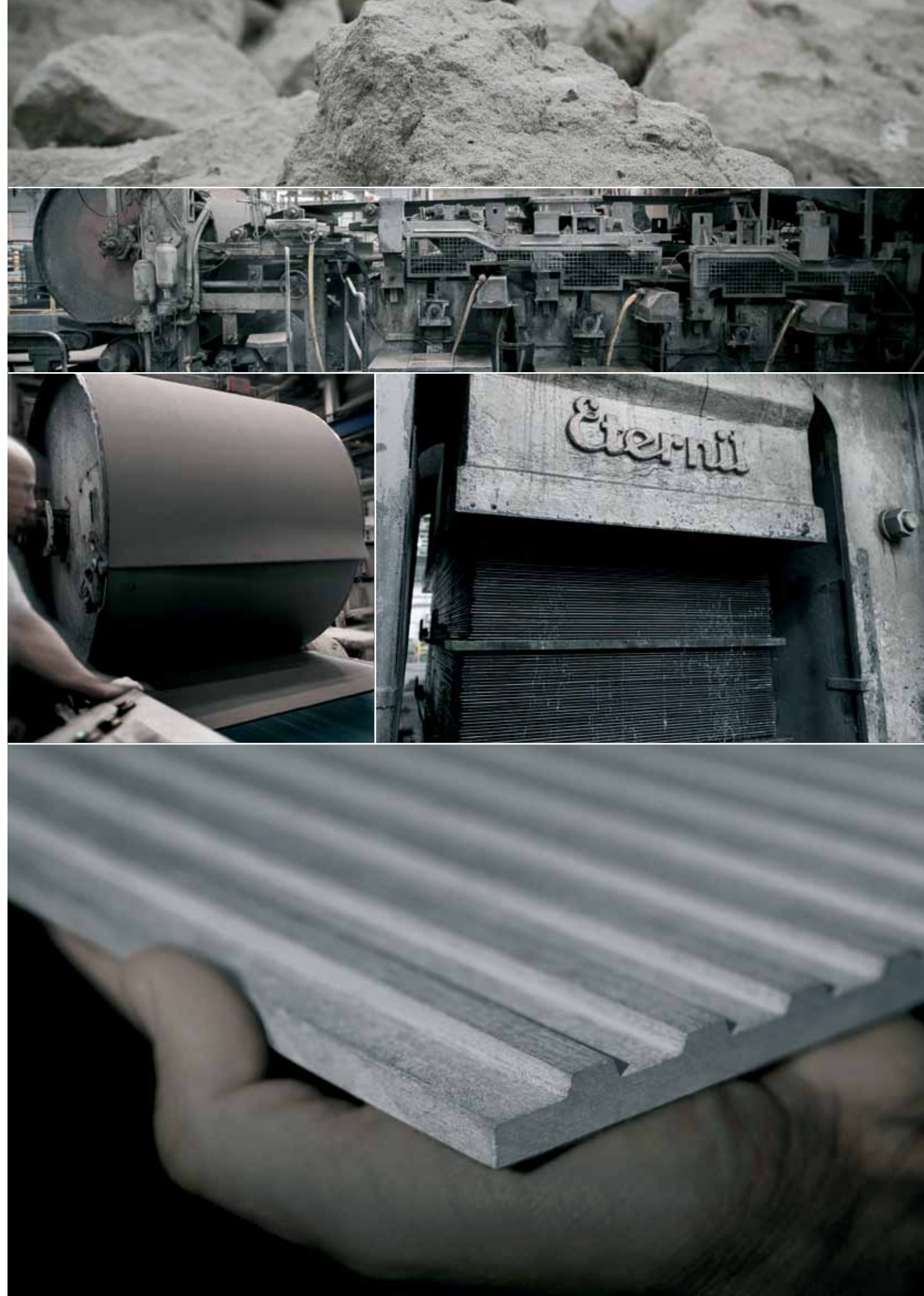


EQUITONE fibre cement facade materials

When Ludwig Hatscheck invented fibre cement in the late 19th century, he combined the basic elements of the earth: mineral materials, water, air and fire (heat) in a simple filtration process. He named the resulting material “Eternit”, hinting at the superior durability of this new material. Our mother company, Etex, has been manufacturing fibre cement materials since 1905. The most prestigious incarnation in this proud heritage of unique materials is the EQUITONE® facade material range. The Hatscheck production process makes each EQUITONE facade panel unique with an individual fibre cement texture. Most EQUITONE facade materials are not treated with artificial colour coatings, giving the equitoned, or through-coloured, materials a raw, unfinished character.

In the 1950s leading architects such as Walter Gropius pioneered the use of coated fibre cement panels using the ventilated facade (rainscreen) system. Designer Willy Guhl created the famous “loop chair” from 1 piece of fibre cement in 1954. This design still bears witness to the core qualities of the fibre cement base material: thin, light yet indestructible and beautiful. In 1987, Herzog & De Meuron designed the Ricola storage building in Laufen using uncoated fibre cement panels. The resulting shutter facade, which is a reference to the cardboard boxes inside, inspired our company to start the industrial development of raw untreated fibre cement materials.

Today, EQUITONE has a full range of through-coloured, untreated fibre cement materials. Leading architects of our time are exploring and transforming the EQUITONE material in remarkable facade designs.





Design potential

EQUITONE facade materials offer unparalleled design flexibility. The fibre cement material is through-coloured, which means the surface displays the inner texture and colour of the core eternit material. No matter what facade design options you explore, the through-coloured materials can be transformed into crisp, monolithic facade details.

EQUITONE facade material comes in a maximum panel size of 1.25 x 3m (4' x 10') and can be transformed into any size or shape using standard tools in the workshop or on site. The material can be perforated using waterjet or CNC machines, large or very small cuts can be made, it can even be embossed and printed. Some designers have used it for interiors or furniture. The equitoned or through-coloured material allows you to achieve flawless intricate details.



Arch.: Bogusław Wórzeczek, Wrocław, Poland



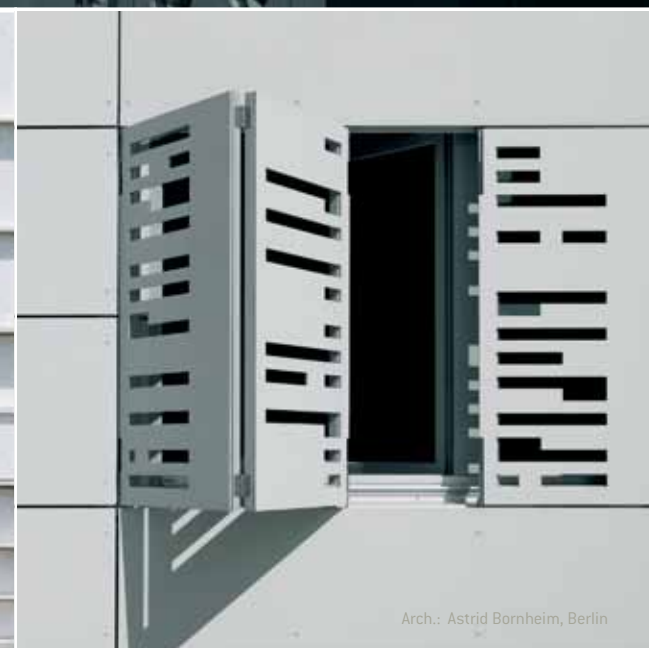
Arch.: AR-TE, Leuven, Belgium



Arch.: Regina Schineis, Augsburg, Germany



Arch.: Busmann + Haberer, Berlin



Arch.: Astrid Bornheim, Berlin

NEW

EQUITONE [linea]

Clerkenwell Design Week London pavilion

Arch.: Studio Weave, London



EQUITONE [linea]

EQUITONE [linea] is a unique 3D shaped, through-coloured facade material that plays with light and shadow. Linea displays a linear texture that highlights the raw inner texture of the core fibre cement material. Every moment of the day, the changing angle of the daylight gives the facade material a different aspect. The material comes in a large panel size and can be transformed into any size or shape in the workshop or on site. No matter what design options you explore, EQUITONE's through-coloured nature guarantees crisp, monolithic details. Both visible and invisible fixing options exist for EQUITONE [linea].

Shadow effect:

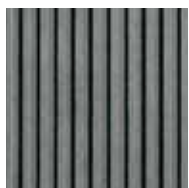
8:00 AM



9:00 AM



10:00 AM



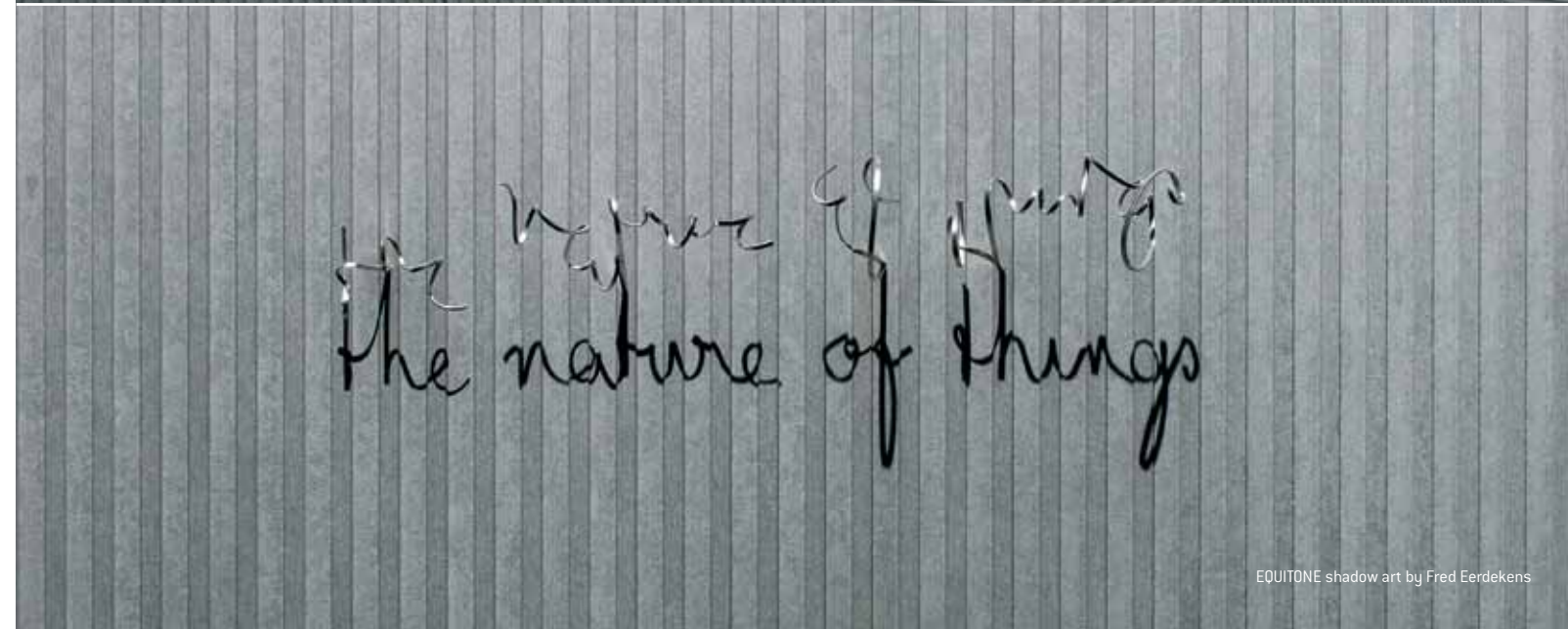
11:00 AM



12:00 Midday



Arch.: Studio Weave, London



EQUITONE shadow art by Fred Eerdekens



EQUITONE [natura]

EQUITONE [natura]

EQUITONE [natura] is a through-coloured facade material. Every EQUITONE [natura] panel is unique, subtly displaying the raw texture of the core eternit fibre cement material. The material comes in a large panel size and can be transformed into any size or shape in the workshop or on site. No matter what design options you explore, EQUITONE's through-coloured nature guarantees crisp, monolithic details.

Available in 20 other colours:





EQUITONE [tectiva]

EQUITONE [tectiva]

EQUITONE [tectiva] is a through-coloured facade material, characterised by a sanded surface and naturally occurring hues within the material. Every tectiva panel is unique, strongly expressing the raw texture of the core eternit fibre cement material. The material comes in a maximum panel size of 1.25 x 3m (4' x 10') and can be transformed into any size or shape in the workshop or on site. No matter what design options you explore, EQUITONE's through-coloured nature guarantees crisp, monolithic details.

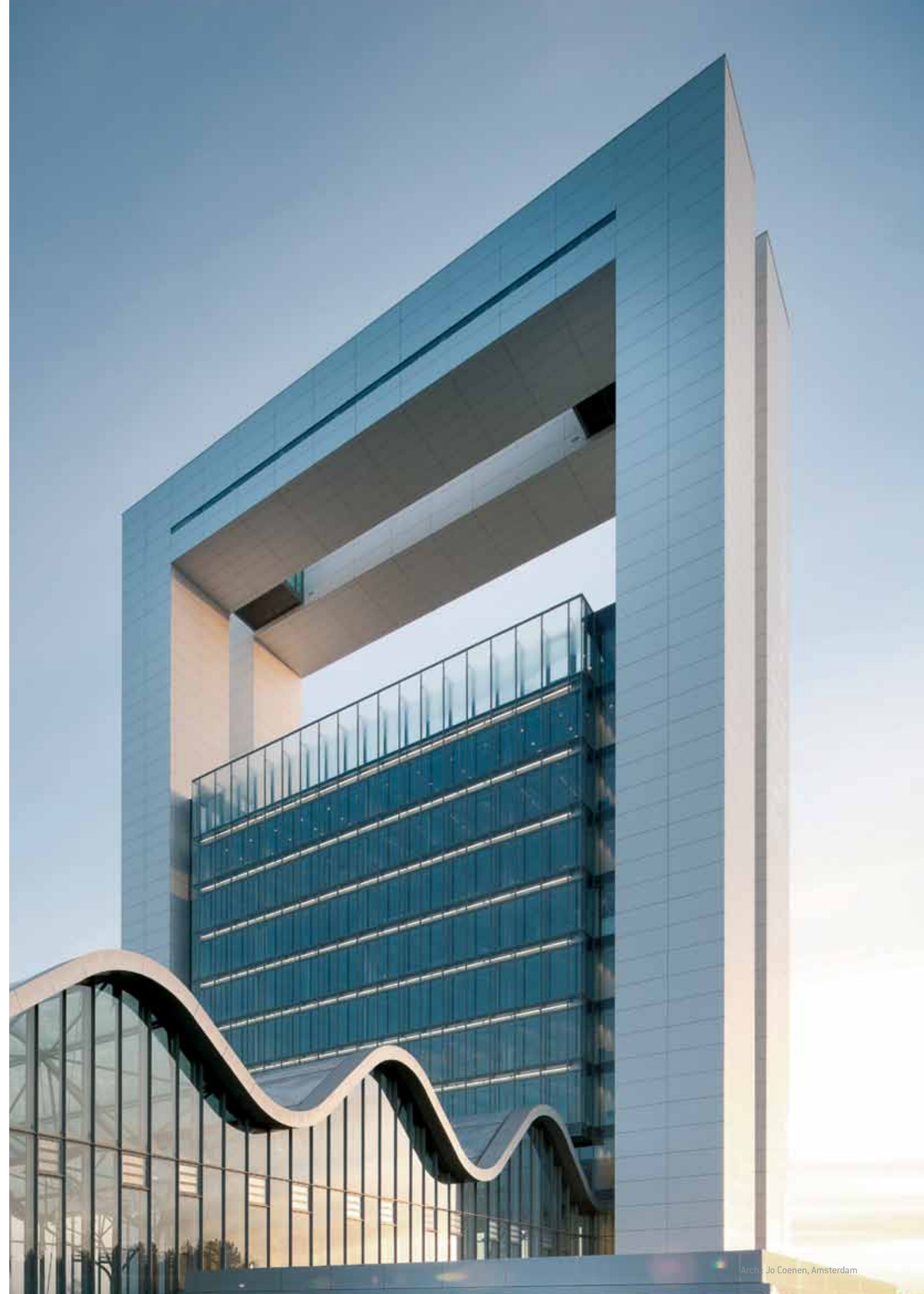
Available colours:

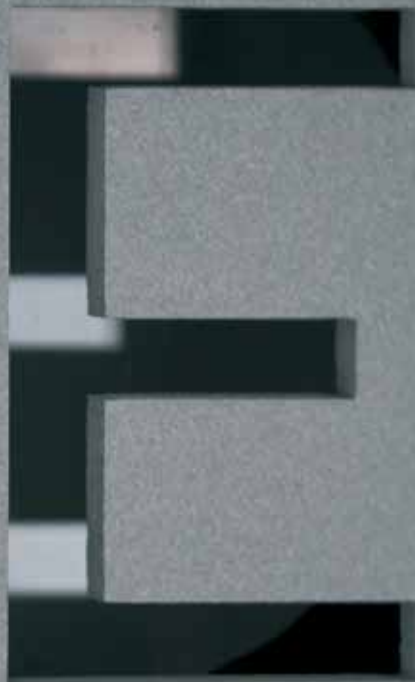


EQUITONE [pictura]

EQUITONE [pictura] is an eternit fibre cement facade material with ultra matt architectural finish. Thousands of custom-matched matt project colours are available on request. The material comes in a large panel size and can be transformed into any size or shape in the workshop or on site. The material can also be perforated or printed. No matter what design options you explore, EQUITONE material is ideal for crisp detailing.

Available in many other standard and project colour finishes:





EQUITONE

Fibre cement facade materials



EUROPANELS
european quality for drywall, cladding and roofing

Euro Panels Overseas NV
Bormstraat 24 - 2830 Willebroek - Belgium
T +32 (0)15 71 73 80 - F +32 (0)15 71 73 89 - info@europanels.net - www.europanels.net